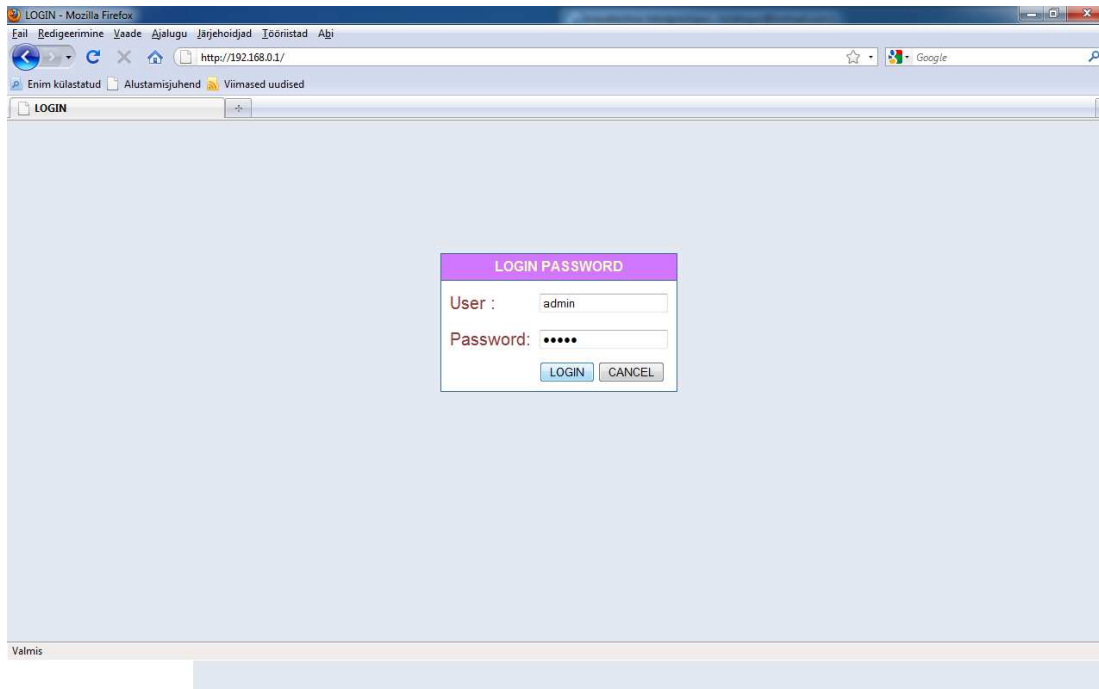
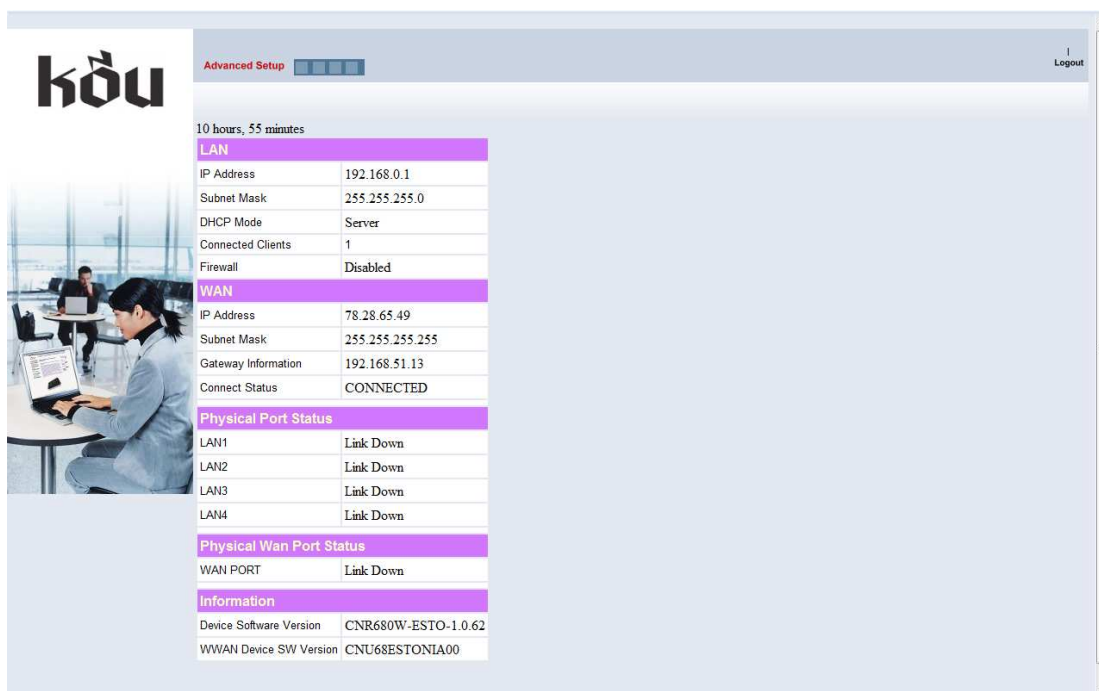


**HOIATUS: Programmi uuendamisel veenduge, et seade ei kaotaks ühendust arvuti ega vooluvõrguga, see võib põhjustada pöördumatuid kahjustusi KÕU seadmele!**

Avada Internet, tippida aadressireale numbrid **192.168.0.1** Avaneb leht, mis on pildil näha. Sisestada User: **admin**, Password: **admin**, ning vajutada nupule „**Login**“.



Avanenud lehel vajutada nupule „**Advanced Setup**“.



**Advanced Setup** Logout

10 hours, 55 minutes

**LAN**

IP Address	192.168.0.1
Subnet Mask	255.255.255.0
DHCP Mode	Server
Connected Clients	1
Firewall	Disabled

**WAN**

IP Address	78.28.65.49
Subnet Mask	255.255.255.255
Gateway Information	192.168.51.13
Connect Status	CONNECTED

**Physical Port Status**

LAN1	Link Down
LAN2	Link Down
LAN3	Link Down
LAN4	Link Down

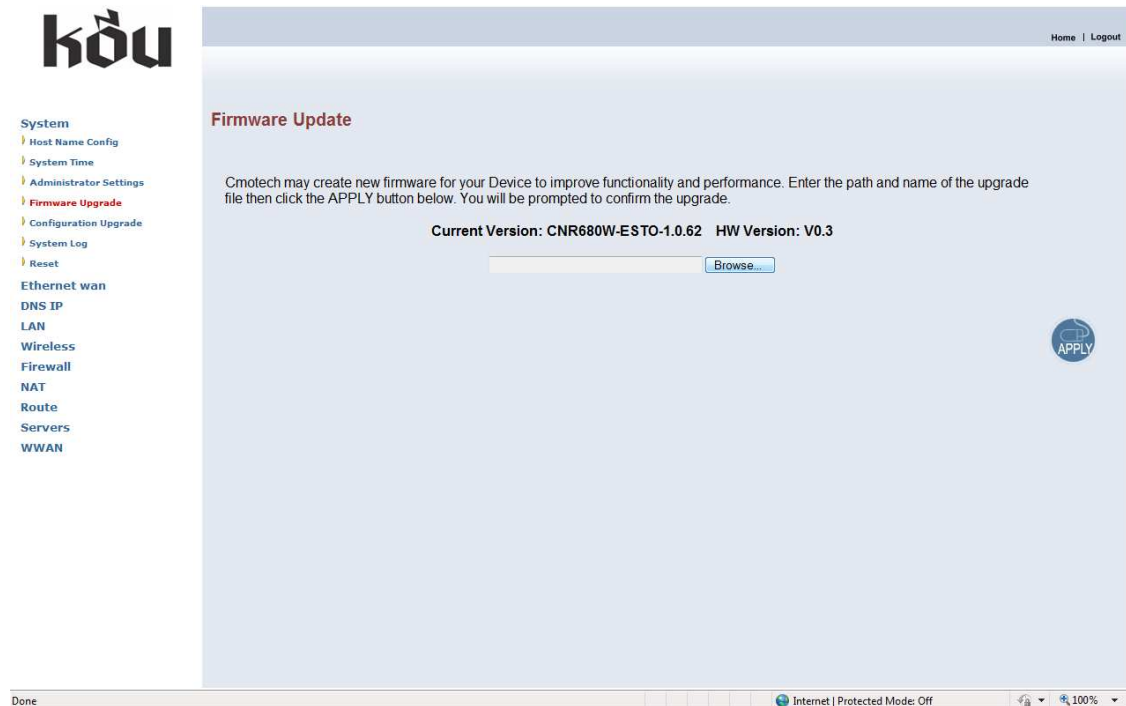
**Physical Wan Port Status**

WAN PORT	Link Down
----------	-----------

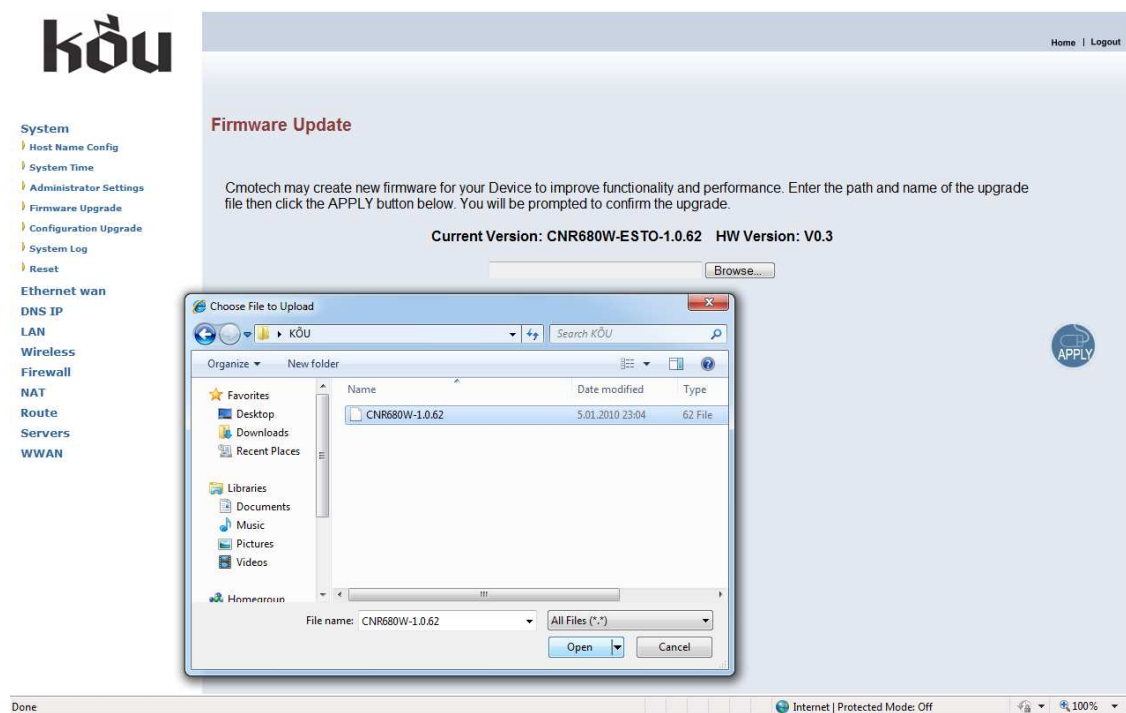
**Information**

Device Software Version	CNR680W-ESTO-1.0.62
WWAN Device SW Version	CNU68ESTONIA00

Avaneb leht, kus tuleb valida: **System** → **Firmware Upgrade**. Järgmiseks vajutada nupule „Browse“.



Avanenud aknas tuleb üles otsida Fail nimega „CNR680W-ESTO-1.0.65“ (antud fail tuleb alla laadida Televõrgu kodulehelt) ning vajutada nupule „Open“. Järgnevalt vajutada nupule „Apply“.



Avaneb aken, kus vajutada nupule „OK“

The screenshot shows the Kõu web interface. On the left is a navigation menu with categories like System, Ethernet wan, DNS IP, LAN, Wireless, Firewall, NAT, Route, Servers, and WWAN. The main content area is titled 'Firmware Update' and contains instructions: 'Cmotech may create new firmware for your Device to improve functionality and performance. Enter the path and name of the upgrade file then click the APPLY button below. You will be prompted to confirm the upgrade.' It shows 'Current Version: CNR680W-ESTO-1.0.62 HW Version: V0.3' and a file path 'C:\Users\Marko\Desktop\KÕU\CNR680W' with a 'Browse...' button. A blue 'APPLY' button is on the right. A modal dialog box titled 'Message from webpage' is open, asking 'Do you wish to continue with the upgrade process?' with 'OK' and 'Cancel' buttons. The browser status bar at the bottom shows 'Internet | Protected Mode: Off' and '100%' zoom.

Järgnevalt avaneb aken, kus vajutada nupule „OK“.

This screenshot shows the same 'Firmware Update' page. Below the file path, it says 'Do not turn off the device during upgrade. 1%'. The 'APPLY' button is now active. A modal dialog box titled 'Message from webpage' is open, displaying a warning icon and the text: 'At the end of the upgrade, the System may not respond to commands for as long as one minute. This is normal behavior and do not turn off Device during the time.' with an 'OK' button. The browser status bar at the bottom shows 'Waiting for http://192.168.0.1/login.asp...' and 'Internet | Protected Mode: Off'.

Toimub programmi uuendamine. Peale seda avaneb avaleht, kus on lahtrid User ja Password. Enne kui on võimalik uuesti Kõu seadet kasutama hakata, tuleb seadmele teha reset (seadme küljel on reset nupp, mida saab vajutada kirjaklambri otsaga. Nuppu on vaja all hoida, kuni Power tuli hakkab vilkuma.). Programmi uuendamine on lõpule viidud.